

BROOK TAVERNER

SINCE 1912

CASUALS & SEPARATES JERSEY STRETCH



CAMILA TROUSER - 2371



DESCRIPTION

Mid-waisted, pull on, capri style, fixed inside leg with vent, 2 side pockets, 2 hip patch pockets.

COMMODITY CODE: 62046318900

FABRIC SPECIFICATION

Composition:

67% Viscose, 29% Polyamide, 4% Elastane

Weight: 360 g/m / Midweight

Stretch: Very high level of stretch

SIZES

6 - 24 regular leg length = 26" / 66cm

6 - 24 long leg length = 29" / 73.5cm

COLOURS

Available in 2 fabric colours:

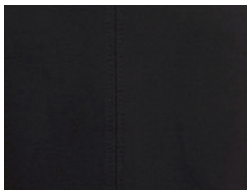
A - Navy

D - Black

A.



D.



WASHCARE INSTRUCTIONS



Machine Washable



Wash Separately



Reshape garments naturally



Do NOT tumble dry



Cool iron over damp cloth



Do NOT dry clean



STANDARD 100

GARMENT MEASURED FLAT & FASTENED (CM)

Size	6	8	10	12	14	16	18	20	22	24
1/2 Waist	34	36.5	39	41.5	44	46.5	49	51.5	54	56.5
1/2 Hip	44.5	47	49.5	52	54.5	57	59.5	62	64.5	67
Inside Leg: Regular	66	66	66	66	66	66	66	66	66	66
Inside Leg: Long	73.5	73.5	73.5	73.5	73.5	73.5	73.5	73.5	73.5	73.5

Working, together.

www.brooktaverner.com