

# BROOK TAVERNER

SINCE 1912

## CASUALS & SEPARATES TWEED

### WOMEN'S GREENVILLE WAISTCOAT – 2383



#### DESCRIPTION

Notch lapel, 5 button front, 2 welt pockets, lining back with vent detail and adjuster.

**COMMODITY CODE:** 62114390000

#### FABRIC SPECIFICATION

##### Composition:

40% Polyester, 40% Wool, 20% Mixed Fibres with Teflon finish

Weight: 325g/m / Midweight

Protection: High Level of Stain Resistance

#### SIZES

XS	4 - 6
S	8 - 10
M	12 - 14
L	16 - 18
XL	20 - 22
2XL	24 - 26

Centre back length at size M = 51,5cm

#### COLOURS

Available in 3 fabric colours

**A** - Navy Herringbone

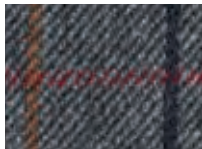
**B** - Navy Check

**E** - Grey Brown Check

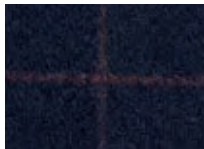
A



E



B



### WASHCARE INSTRUCTIONS



Dry Clean  
Only



STANDARD  
100



### GARMENT MEASURED FLAT & FASTENED (CM)

Size	XS	S	M	L	XL	2XL
1/2 Bust	39.75	44.75	49.75	54.75	59.75	64.75
Centre Back Length	49.5	50.5	51.5	52.5	53.5	54.5

Working, together.

[www.brooktaverner.com](http://www.brooktaverner.com)